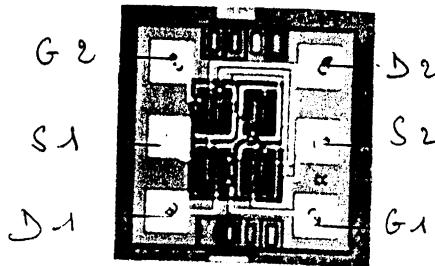




# Sierra Components, Inc.

2222 Park Place • Suite 3E • Minden, Nevada 89423  
Phone: 775.783.4940 Fax: 775.783.4947

Chip back potential is the level which bulk silicon is maintained by on-chip connection, or it is the level to which the chip back must be connected when specifically stated below. If no potential is given the chip back should be isolated.



**Topside Metal:** Al ( Aluminum)  
**Backside:** Au ( Gold)  
**Backside Potential:**  
**Mask Ref:**  
**Bond Pads (Mils):**

**APPROVED BY:**   
**MFG: Siliconix**

**DIE SIZE (Mils):** .023" X .023" **DATE:** 3/4/99  
**THICKNESS:** 8 **P/N:** U423NNT

DG 10.1.2  
Rev A 3-4-99